

Cynomolgus PD-L1/B7-H1 Protein

Cat. No. PDL-CM210



Description

Source	Recombinant Cynomolgus PD-L1/B7-H1 Protein is expressed from HEK293 with hFc tag at the C-Terminus.
	It contains Phe19-Arg238.
Accession	G7PSE7
Molecular Weight	The protein has a predicted MW of 52 kDa. Due to glycosylation, the protein migrates to 60-70 kDa based on Bis-Tris PAGE result.
Endotoxin	Less than 1 EU per µg by the LAL method.
Purity	> 95% as determined by Bis-Tris PAGE
	> 95% as determined by HPLC

Formulation and Storage

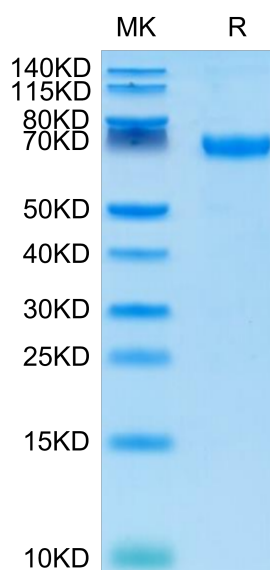
Formulation	Lyophilized from 0.22µm filtered solution in PBS (pH 7.4). Normally 8% trehalose is added as protectant before lyophilization.
Reconstitution	Dissolve the lyophilized protein in distilled water. Please refer to the Certificate of Analysis for detailed instructions.
Storage	-20 to -80°C for 12 months as supplied from date of receipt. -80°C for 3 months after reconstitution. Recommend to aliquot the protein into smaller quantities for optimal storage. Please minimize freeze-thaw cycles.

Background

B7-H1, also known as PD-L1 and CD274, is an approximately 65 kDa transmembrane glycoprotein in the B7 family of immune regulatory molecules. PD-L1 has been identified as the ligand for the immunoinhibitory receptor programmed death-1(PD1/PDCD1) and has been demonstrated to play a role in the regulation of immune responses and peripheral tolerance.

Assay Data

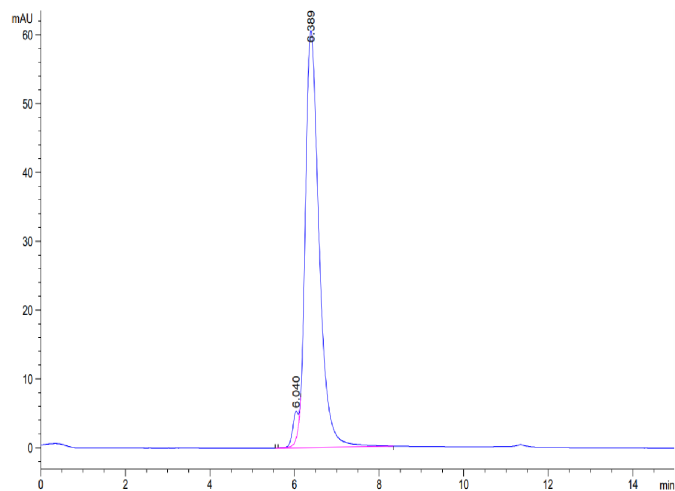
Bis-Tris PAGE



Cynomolgus PD-L1 on Bis-Tris PAGE under reduced conditions. The purity is greater than 95%.

SEC-HPLC

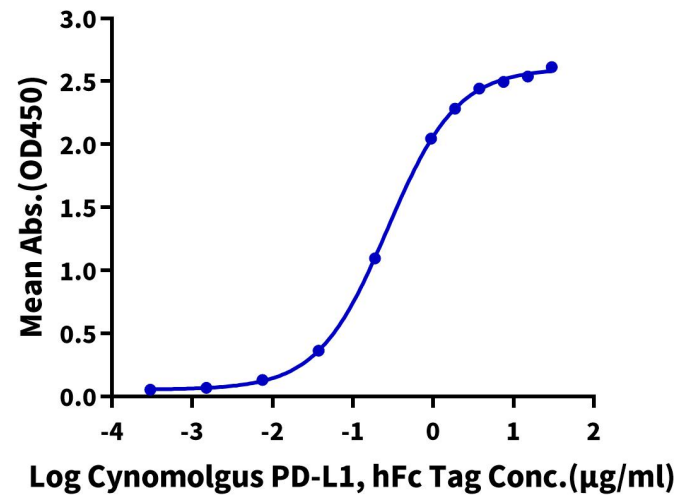
Assay Data



The purity of Cynomolgus PD-L1 is greater than 95% as determined by SEC-HPLC.

ELISA Data

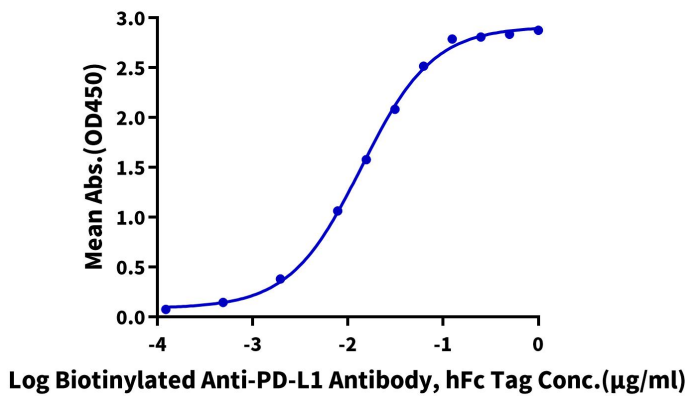
Cynomolgus PD-L1, hFc Tag ELISA
0.2µg Cynomolgus PD-1, His Tag Per Well



Immobilized Cynomolgus PD-1, His Tag at 2µg/ml (100µl/well) on the plate. Dose response curve for Cynomolgus PD-L1, hFc Tag with the EC50 of 0.27µg/ml determined by ELISA.

ELISA Data

Cynomolgus PD-L1, hFc Tag ELISA
0.1µg Cynomolgus PD-L1, hFc Tag Per Well



Immobilized Cynomolgus PD-L1, hFc Tag at 1µg/ml (100µl/well) on the plate. Dose response curve for Biotinylated Anti-PD-L1 Antibody, hFc Tag with the EC50 of 13.8ng/ml determined by ELISA.